

# eagle 3526



## **DESCRIPTION OF THE TECHNICAL FEATURES**

The **EAGLE** series aerial telescopic platforms are designed for working at a height, they have a considerable outreach and have an articulated telescopic arm that is fixed to the top of the last telescopic part of the base arm, which enables:

- the platform to be loaded and accessed in any position
- to be lifted over high obstacles
- even the work area underneath the vehicle to be used completely
- extreme accuracy to be achieved when approaching at a height
- the profile to become very compact during transit.

### **BASE FRAME**

High-quality welded steel structure fixed to the vehicle chassis. It is equipped with 4 stabilizing feet on extendible crossbeams. On the rear part of the frame there is the rotation fifth wheel that supports the superstructure. The frame is completed with a non-slip aluminium work platform, side panels, and a fold-away ladder for accessing the control post on the ground.

### **ARM-BEARING TURRET**

It is made of high-quality die-formed welded sheet steel and is installed on a double-row ball bearing of the appropriate dimensions, with electric and hydraulic rotating distributors that enable the superstructure to rotate continuously through 360°. Rotation device with normally closed parking brake that opens automatically.

### **TELESCOPIC ARM**

Telescopic operating arm with a synchronized extending element that is made of die-formed and welded sheet steel with an extremely high yielding limit. The extendible parts slide on sliding blocks made of self-lubricating material with a very low friction coefficient.

### **EXTENDIBLE ARTICULATED JIB**

Fixed to the last telescopic element of the base arm with the possibility of turning through 170°. Made of die-formed and welded sheet steel



## **OIL&STEEL SPA**

Via Verdi 22  
41018 San Cesario Sul Panaro  
info@oilsteel.com  
Modena - Italy

subject to management and coordination  
of PM Group spa, a company with a sole director  
Registered with Companies Register of Modena as R.E.A. 282202

Tel. +39 059 936811 Fax +39 059 936413

SHARE CAPITAL €362,400.00, fully  
TAX CODE/VAT NUMBER 0231366  
www.oilsteel.com –

with an extremely high yielding limit. The extendible jib has two telescopic elements that enable it to go above any obstacle.

#### **OPERATOR PLATFORM**

High-quality tubular and sheet steel structure that is hydraulically enlargeable, thus significantly increasing the work front. Access gates with spring-closing and stop, 90° hydraulic rotation to the right and the left in relation to the axis of the arm (to become aligned on the work front), levelling with hydraulic actuator controlled by automatic electronic device with manual emergency operation.

#### **CONTROLS**

Proportional electric hydraulic controls on platform and on ground with platform controls overriding ground controls.

#### **HYDRAULIC SYSTEM SUPPLY**

Main system: with pump coupled with the vehicle's power take off.  
Emergency system: with electro-hydraulic power supplied by the batteries of the motor vehicle, which enables the platform to be lowered even when the engine is switched off.

#### **OUTREACH LIMITER**

Provided with outreach limiter that is necessary for ensuring the platform's stability over the entire operating area. On all the control panels there is a prealarm signal with a flashing light and acoustic signal to warn the operator that the maximum outreach point has almost been reached and that all the functions that jeopardize stability are about to be arrested automatically.

#### **REDUCTION OF PROFILE STABILIZATION**

In order to reduce the profile of the base when working in confined spaces, a system has been installed that enables the stabilizer crossbeams not to be enlarged on the side opposite the side on which it is intended to extend the arm. This system enables the operating arm to be rotated and opened only on the side in which stabilization is guaranteed, rotation being stopped automatically if the operator tries to move into the operating area in which there is reduced stabilization. A work area with reduced stabilization is also possible.

#### **STANDARD SAFETY DEVICES**

- Vehicle gear box lever lock with platform in operation
- Electronic control of levelling of the platform
- Control of extension of stabilizing crossbeams for various work areas
- Emergency descent with electro-hydraulic unit
- Automatic device that limits its rotation during use with stabilizers not extended on the side opposite the operating side
- Brake normally closed during turret rotation
- Carriage level control inclinometer
- Arm-opening stabilization interlock
- Use and maintenance manual
- Controls on platform override ground controls
- Guard on hydraulic system with safety valves



#### **OIL&STEEL SPA**

Via Verdi 22  
41018 San Cesario Sul Panaro  
info@oilsteel.com  
Modena - Italy

subject to management and coordination  
of PM Group spa, a company with a sole director  
Registered with Companies Register of Modena as R.E.A. 282202

Tel. +39 059 936811 Fax +39 059 936413

SHARE CAPITAL €362,400.00, fully  
TAX CODE/VAT NUMBER 023136  
www.oilsteel.com -

- Thermal overload protection on power system with warning LEDs
- Emergency button with motor cutout
- Electro-hydraulic system of control of levelling of base carriage
- Balanced stop valves on all cylinders

### **SERIALLY MOUNTED ACCESSORIES**

- Automatic accelerator of the motor
- Automatic self-levelling of base carriage acting on the stabilizers
- Vehicle engine and auxiliary motor switched on and off from the platform and the control position in the turret
- 3 safety belts
- Proportional Danfoss controls for simultaneous operations
- Control consoles provided with operation monitoring and limitations display
- Machine operation hour counter
- Device for limiting rotation in the work sector with stabilizers not totally extended
- Device warning that stabilizers are not at rest (vehicle dashboard)
- Dual yellow rotating lamp on vehicle cab
- Electric emergency pump that starts up automatically and is run by the vehicle's batteries
- Intercom system between control console in turret and platform
- Multi-curve outreach limiter
- Extended resting plates of stabilizers in polyurethane
- Hydraulically enlargeable platform with sliding block only on one side, measuring 2400x800x1100 h mm, enlargeable to 3600 mm
- Bilateral stabilizers control position
- Electric socket in platform for 24 VDC lamp
- Illuminated control console panels
- Hydraulic rotation of platform
- Luminous position indicators installed on stabilizer arms
- Power ON warning lamp (vehicle dashboard)
- Overturnable side panels on both sides, h 200 mm
- Rain canopy over control position in turret

#### **OIL&STEEL SPA**

Via Verdi 22  
41018 San Cesario Sul Panaro  
info@oilsteel.com  
Modena - Italy

subject to management and coordination  
of PM Group spa, a company with a sole director  
Registered with Companies Register of Modena as R.E.A. 282202

Tel. +39 059 936811 Fax +39 059 936413

SHARE CAPITAL €362,400.00, fully  
TAX CODE/VAT NUMBER 0231361  
www.oilsteel.com -

**FEATURES AND PERFORMANCE**

<b>Max. operating height</b>	35 m
<b>Max. operating outreach</b>	26 m
<b>Maximum capacity</b>	280 kg/3 people 400 kg/3 people (jib fully retracted)
<b>Dimensions of aluminium operator platform</b>	2400 x 800 x h1100 mm, hydraulically enlargeable to 3600 mm
<b>Controls</b>	Proportional electro-hydraulic system
<b>Turret rotation</b>	continuous
<b>Operator-platform rotation</b>	90° right + 90° left
<b>Stabilization</b>	4 stabilizers on extendible crossbeams
<b>Minimum permitted total weight for installation</b>	26 tonnes

**OPTIONALS AVAILABLE ON REQUEST**

- Impermeable multicolour rests, 6 dimensions, measuring 60 x 60 cm
- Stainless-steel boot, 700 x 400 x h 500 mm, underneath bed
- 60W illuminating lamp on operator platform supplied by vehicle's batteries
- 220VAC current generator, monophase, 380VAC, three-phase at 8kva with hydraulic coupler and power distribution panel in column (with or without auxiliary motor)
- Soundproofed auxiliary motor, Hatz, 3-cylinder with variable-flow pump
- Notice holder
- Webasto heating in cabin
- Underbed water tank with soap dispenser
- Adhesive messages on arm
- Paint other than standard (white RAL 9016)
- Extra painting of vehicle cab

**OIL&STEEL SPA**

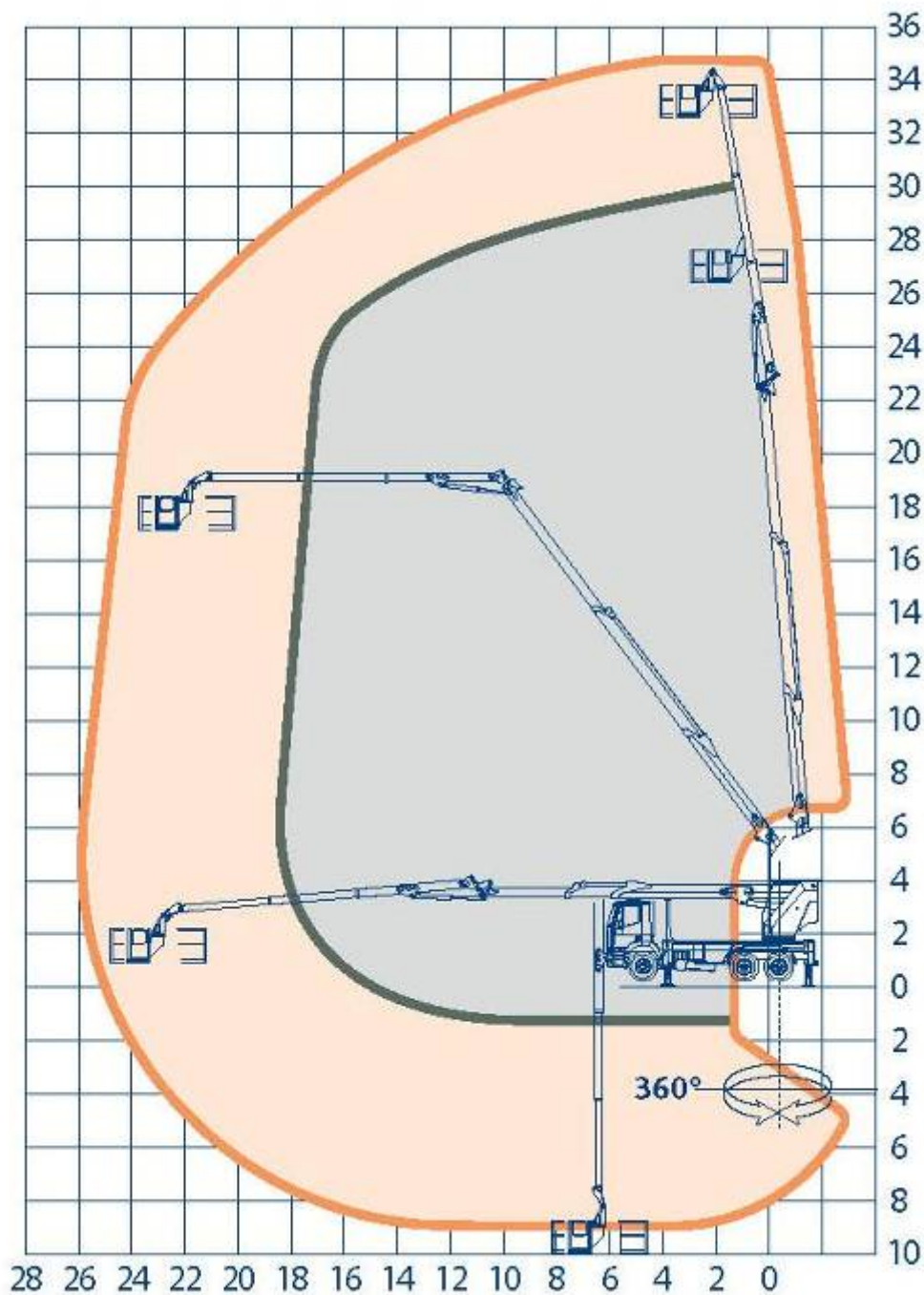
Via Verdi 22  
41018 San Cesario Sul Panaro  
info@oilsteel.com  
Modena - Italy

subject to management and coordination  
of PM Group spa, a company with a sole director  
Registered with Companies Register of Modena as R.E.A. 282202

Tel. +39 059 936811 Fax +39 059 936413

SHARE CAPITAL €362,400.00, fully  
TAX CODE/VAT NUMBER 0231361  
www.oilsteel.com -

**OPERATING AREA AND GEOMETRICAL FIGURES**



\* con jib chiuso

