

# snake 2714 compact



## **“SNAKE 2714 COMPACT” - TRAILER - PLATFORM INSTALLED ON TOWABLE STRUCTURE DRIVABLE WITH CATEGORY B/E LICENCES**

### **DESCRIPTION OF THE TECHNICAL FEATURES:**

#### **BASE FRAME**

High-quality tubular steel and steel sheet framework, bolted to the truck chassis. The frame is equipped with four outriggers, the front two of which are mounted on hydraulically extending stabiliser-bearing arms with vertical descent enclosed end sections. Two enclosed vertical descent stabiliser are fitted on the rear. The frame is completed with a non-slip aluminium work platform with side access ladder and any optional features requested. The work platform's aluminium panelling continues over the two sides, to protect the machine's basic equipment.

#### **ARM-BEARING TURRET**

High-quality steel sheet mounted on the rotation thrust ball bearing with a worm screw system. The turret is rotated by a hydraulic motor coupled to a worm screw which engages with a crown incorporated into the frame.

#### **STANDARD PANTOGRAPH UNIT**

The system used to lift the work arm consists of two pairs of pantograph units, with bars that are the same length, which are driven by a hydraulic jack at the base and a connecting rod transmission between the two systems. All of which is to ensure the operator's platform can perform precision vertical manoeuvres that are accurate to the millimetre. This lifting feature means obstacles at work heights of over 10 m can be manoeuvred round (crossing point).



#### **OIL&STEEL SPA**

Via Verdi 22  
41018 San Cesario Sul Panaro  
Modena - Italy

subject to management and coordination  
of PM Group spa, a company with a sole director  
Registered with Companies Register of Modena as R.E.A. 282202  
Tel. +39 059 936811 Fax +39 059 936413

SHARE CAPITAL €362,400.00, fully paid up  
TAX CODE/VAT NUMBER 02313650364  
www.oilsteel.com – info@oilsteel.com

## OPERATOR'S ARM

Featuring hydraulic telescopic extension and chain transmission, the operator's arm is built of press-formed and welded high-yield strength steel sheet.

For increased protection, it houses the hydraulic extension cylinder and the trunking for the hydraulic lines running to the operator's platform.

## OPERATOR'S PLATFORM

Built entirely of aluminium and fitted with two spacious side gateways to facilitate the operators' access. The gateways are protected with a drop-down safety bar.

## OPERATOR'S PLATFORM LEVELLING

Implemented by a hydraulic parallelogram system, the operator's platform contains two timed cylinders which can be reset manually in the horizontal condition.

## CONTROLS

Equipment fitted with a fully hydraulic control and monitoring system.

Stabilisation: via two hydraulic distributors located on the frame. The first RH distributor allows five manoeuvres, and can move the four outriggers and perform the RH outrigger extension. The other distributor, also located under the floor on the left-hand side (driver's side) has three levers for controlling the two LH outriggers and front LH outrigger opening.

Superstructure: built in duplicate for the two work posts and allows several manoeuvres to be performed at once:

- on the base frame, the operator can control the machine in emergency conditions using the distributor levers
- on the operator's platform, the operator can use the levers connected to the hydraulic distributor, in addition to the various enabling and alarm signal lights, the emergency stop button and the engine start button.

## STANDARD SAFETY DEVICES

- Locks for safety belts on platform
- Anti-collision device that prevents the superstructure hitting the truck cab
- Arm lock when machine is not stabilised
- Stabiliser lock when machine is open
- Self-locking device on rotation unit
- Use and maintenance manual
- Load limiter
- Geometric limiting system
- Hand pump for emergency lowering
- Max. pressure valve on hydraulic circuit
- Thermal protection devices on electrical system
- Lock valves on all cylinders.



**ACCESSORIES FITTED AS STANDARD**

- Truck engine start/stop control on both ground control post and platform control post
- Two safety belts
- Device (on truck dashboard) to signal outriggers not in resting position
- Platform load status gauge
- Hydraulic platform rotation
- 220 V AC single-phase electric power socket on platform
- Power take-off engaged signal light (on truck dashboard).
- Device to reduce the machine's footprint when stabilised which allows operators to work with the outrigger extended only in the desired work area.

**FEATURES AND PERFORMANCE**

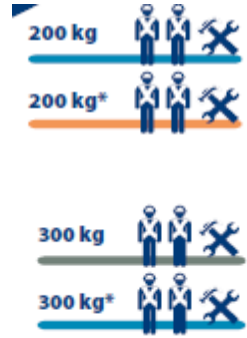
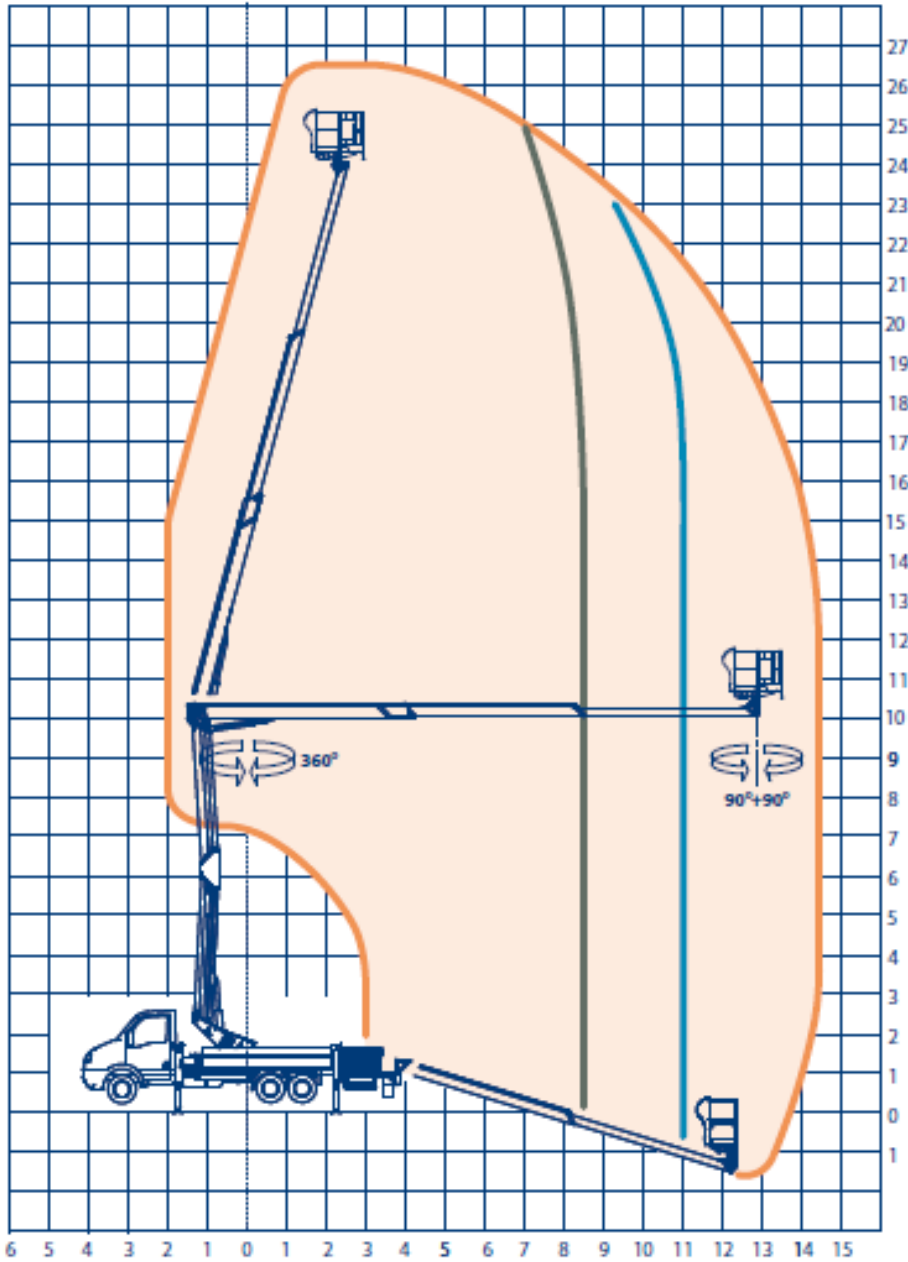
Max. working height	26.70 m
Max. working outreach	14.60 m
Operator's platform	Aluminium, dim.:1700x700xh 1100
Maximum capacity	300 kg, including 2 people
Control type	Hydraulic
Rotation range	360°, non-continuous
Platform rotation	90° R + 90° L
Stabilisation	n. 02 front H-shaped outriggers n. 2 enclosed outriggers
Minimum GVW	8 tons

**ACCESSORIES AVAILABLE ON REQUEST**

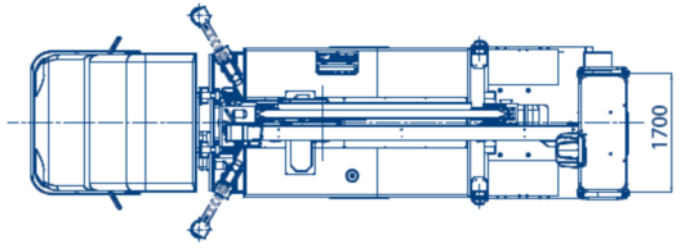
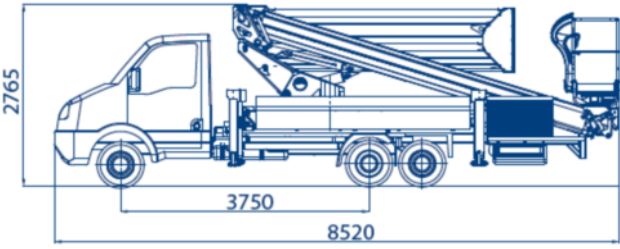
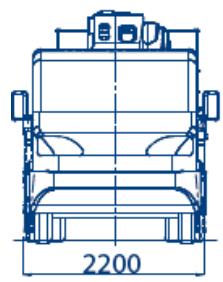
- 12 V AC single-phase electric power socket on platform
- 60W spotlight on platform powered by batteries
- 110 V AC 2.2 kW single-phase auxiliary electric pump including electric control panel and main powered battery charger with 220 V single-phase outlet
- 220 V AC 2.2 kW single-phase auxiliary electric pump including electric control panel and main powered battery charger with 220 V single-phase outlet
- Custom stickers on boom ( customer logo-send .jpg file )
- Electric pump for emergency lowering Extra paintwork for truck cab
- Non-standard paintwork ( RAL 9016 white )
- Non-standard paintwork for cold climate ( RAL 9016 white )
- Paintwork for cold climate ( RAL 9016 white )
- Yellow rotating lamp with magnetic fixture
- Junction protection
- Port traffic cones
- Platform waxing for sea transport
- Sign holders
- Stainless steel tool box, dim. 1000 x 600 x 500 mm

# snake 2714 compact

## WORK AREA AND DRAWINGS



• traverse aperte / extended supports / soportes extendidos / bequilles ouvertes



**OIL&STEEL SPA**  
Via Verdi 22  
41018 San Cesario Sul Panaro  
Modena - Italy

subject to management and coordination  
of PM Group spa, a company with a sole director  
Registered with Companies Register of Modena as R.E.A. 282202  
Tel. +39 059 936811 Fax +39 059 936413

SHARE CAPITAL €362,400.00, fully paid up  
TAX CODE/VAT NUMBER 02313650364  
www.oilsteel.com - info@oilsteel.com